



Zococamino

NEPAL 2025

LANGTANG VALLEY TREK

A UNIQUE EXPERIENCE ON THE TOP OF THE WORLD

AN EPIC ADVENTURE

12 DAYS

TREK

Langtang Valley

CLIMB

Tserko Ri - Peak 4.985m

TOUR

Kathmandu/Patan & much more

Explore this legendary route in Nepal and immerse yourself in an experience that will change your life forever.



LANGTANG VALLEY

The Langtang trek is a medium-level trek that goes up and down the bank of the river with the same name, Langtang.

In the first part of the route the landscape is dominated by various types of forests with lots of wildlife. The area is a paradise for animals. Some that can be seen are the Himalayan red panda, monkeys, musk deer, black bear or the famous snow leopard.

The most beautiful forest is the bamboo forest. Green is the predominant color along with the blue of the river. Once gaining altitude, the valley opens up and the high mountains begin to dominate the landscape.

Starting from the town of Lantang, the vegetation gives way to the snow-capped peaks that dominate the upper part of the valley. In 2015 there was a very strong earthquake in Nepal and this area was the most destroyed. Only one house in Langtang village was left standing after the earthquake. Most of the houses and shelters have been rebuilt.



LANGTANG VALLEY

- Langtang is the third most popular trekking area in Nepal after the Everest and Annapurna area. (both overcrowded)
- It is located 70 kilometers from Kathmandu and has a wide variety of climatic zones, from subtropical to alpine due to the great difference in altitude between the different zones.
- The Langtang region is closer to Kathmandu than other trekking regions and yet is less frequented.
- Bordering Tibet, the majority of the local population is Tamang, and has a Tibetan-influenced lifestyle and culture.

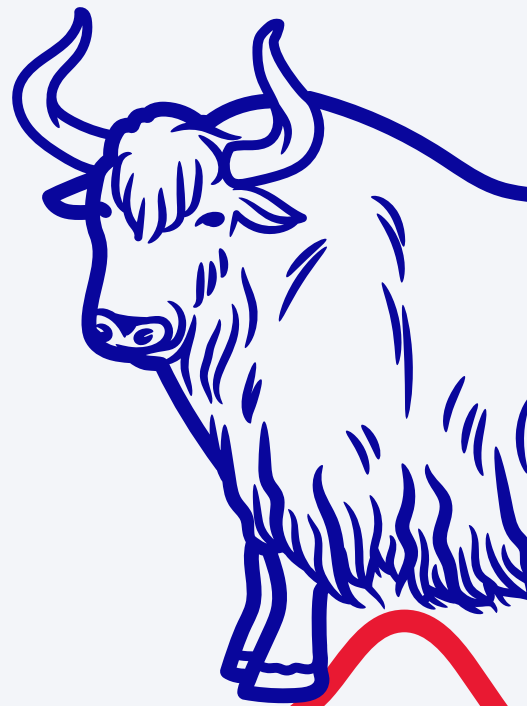




Live the Mountain

A Journey of Connection and Discovery

Delve into the stunning Langtang Valley, where every step brings you closer to the majesty of the Himalayas. This journey not only challenges your body, but also nourishes your spirit by connecting with nature and the rich Nepali culture. Enjoy stunning views, experience the warmth of local communities and feel the tranquility that only this corner of the world can offer. Join us in a unique experience, where each trail reveals the grandeur of the mountains and the depth of an unforgettable adventure. Experience Nepal like never before!





THE PROGRAM

TREK

Langtang Valley

CLIMB

Tserko Ri - Peak 4.985m

TOUR

Katmand/Patan & much more

DAY 1	Arrival in Kathmandu. Pick up, transfer and accommodation at the hotel. welcome dinner
DAY 2	Visit to the city of Kathmandu, afternoon shopping for trekking equipment.
DAY 3	Travel from Kathmandu to Syabrubesi (1,450m) // 7 - 8h trip. Private Jeep
DAY 4	Trek from Syabrubesi to Lama Hotel (2,505m) // 6 – 7 hours
DAY 5	Trek from Lama Hotel to Langtang (3,430m) // 6 – 7 hours
DAY 6	Trek from Langtang to Kyanjin Gomba (3,900m) // 3 – 4 hours
DAY 7	Ascension to Tserko Ri (4,985m) and return to Kyanjin Gomba // 7 – 8 hours
DAY 8	Trek from Kyanjin Gomba to Lama Hotel // 7 – 8 hours
DAY 9	Trek from Lama Hotel to Syabrubesi // 6 – 7 hours
DAY 10	Travel from Syabrubesi to Kathmandu // 7 – 8 hours of travel. Private Jeep
DAY 11	Morning visit to the temples of Patan, afternoon free for shopping.
DAY 12	Transfer to Kathmandu international airport and end of the circuit.



DAY 1

ARRIVAL TO KATHMANDU

* Pick up at Kathmandu International Airport, transfer to the hotel in the central Thamel neighborhood. Welcome dinner and briefing.



DAY 2

KATHMANDU

* We will take advantage of the morning to visit the historic center of Kathmandu and dedicate the afternoon to purchasing trekking equipment.



DAY 3

SYABRUBESI (1.450,.M)

*

From Kathmandu to Syabrubesi we will travel by private jeep to the starting point of the trek in the Langtang Valley Park, we will travel along high mountain roads and paths for 7 hours.

The views of the agricultural terraces of the cliffs and valleys will make the transfer more bearable.





DAY 4

SYABRUBESI-LAMA HOTEL (2.505M)

* First thing in the morning we will begin walking, leaving Syabrubesi along a suspension bridge and entering a beautiful tropical landscape of a dense bamboo forest, along with the noise of the continuous waterfalls of the river. We enter another dimension.

Along the way, where the forest is denser, if we are lucky we will be able to see the famous red pandas, monkeys and many types of birds. It is a wilder area than Annapurna or Everest

Before night falls we will arrive at the town of Lama Hotel, a mandatory stop for expedition members.





DAY 5

LAMA HOTEL-LANGTANG (3.430M)

*

Today we will see how the landscape is transformed. We gain height and this is reflected in the type of vegetation and animals. There are no longer forests but alpine and animal meadows, we find yaks and wild goats. The valley opens up and shows us the long-awaited frozen peaks. The highest peak in the area is Langtang Lirung and measures 7,209 m.

The journey will be demanding for seven hours, always ascending but enjoying the noise of the Langtang River. We will cross the old town of Langtang buried by the 2015 earthquake.





DAY 6

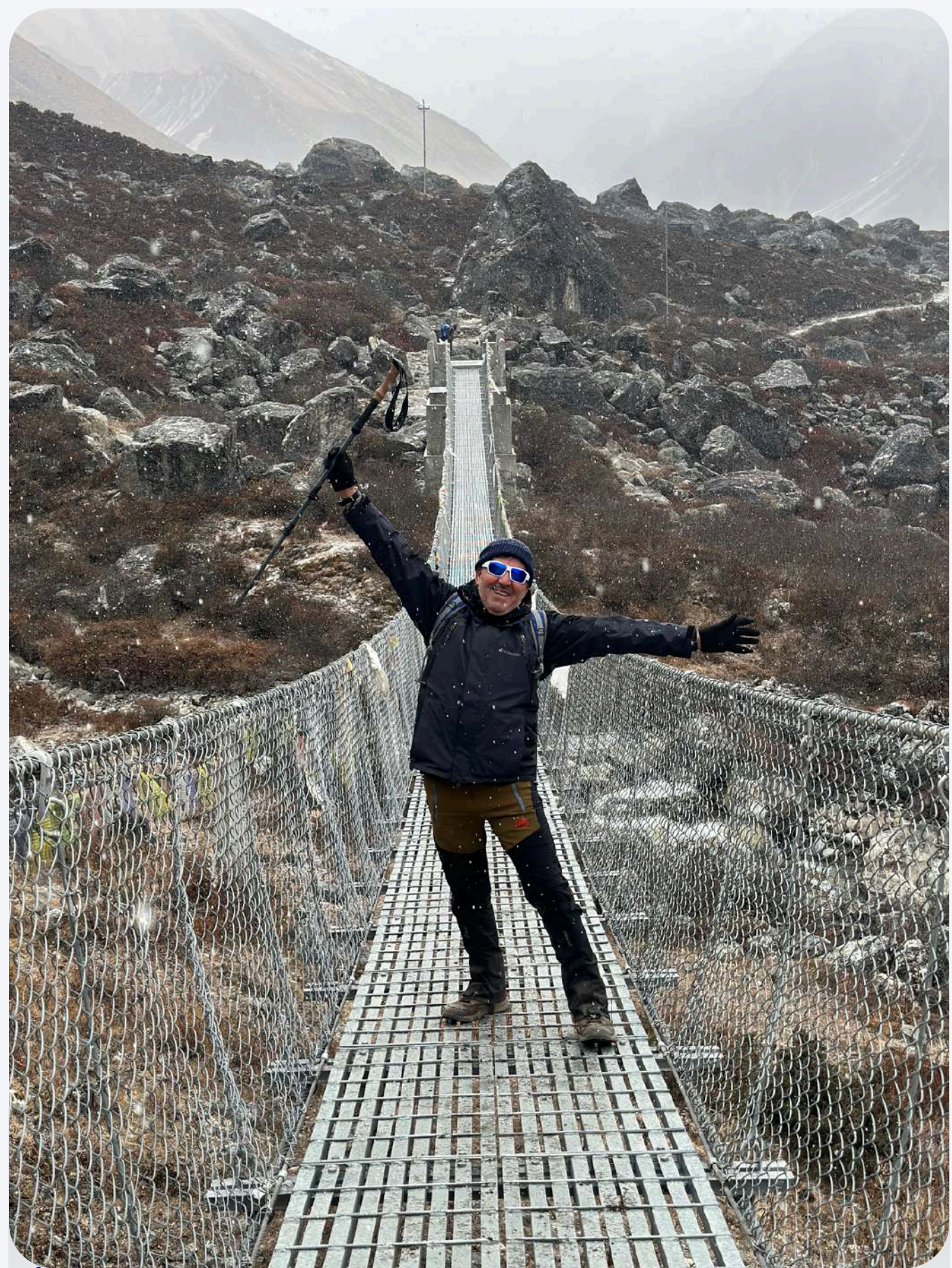
LANGTANG-KYANGI GOMPA (3.900M)

*

The day will be about adaptation to the altitude, we will walk for four hours reaching practically four thousand meters of altitude, it is very noticeable when walking and especially when breathing.

We will cross waterfalls of frozen waters, and we will contemplate the yaks grazing on the banks of the road. We will see caravans of mules and donkeys transporting all the food and materials consumed in the area.

In the afternoon/evening we will share with other mountaineers, who the next day will try to reach the summit of Tserko Ri.





DAY 7

CLIMB TO TSERKO RI (4.985M)

*

Very early in the morning before dawn we leave the town to reach the summit of Tserko Ri (4,985m). The first section of the trail is very easy, almost flat until you reach the glacier area. Once you cross the river, the road begins to get tougher.

After about 4/5 hours of climbing we reached the summit. From here we can see snow-capped peaks over 6,000 – 7,000 m above sea level on all sides, such as: Langtang Lirung (7,209 m), Ganchempo (6,455 m), Langshisha Ri (6,427 m), a real wonder. After taking photos and having a good time we started going down to Kyanjin Gompa.





* We now have to make the way back, in a more relaxed way, contemplating the landscape much more, and recovering our lung capacity as we descend in altitude.
If we have good time, we will take advantage of a thermal area of the river to take a relaxing bath.

DÍA 8

KYANJIN GOMPA-LAMA HOTEL

DÍA 9

LAMA HOTEL-SYABRUBESI

DÍA 10

SYABRUBESI-KATHMANDU

* We will get up early to make the trip to Kathmandu in the morning and have the afternoon free in the city.



DAY 11

PATAN-KATHMANDU

* We will spend the morning visiting the Patán neighborhood, all its palaces and the famous Golden Temple. After lunch we will have the afternoon free in Thamel in Kathmandu to do the last shopping. We will end the day with a farewell dinner.

DAY 12

KATHMANDU- AIRPORT

* Today after breakfast we will transfer to the international airport to take the flight to the city of origin and we will conclude our services.



A New Breath Nepal - Langtang Valley Trek



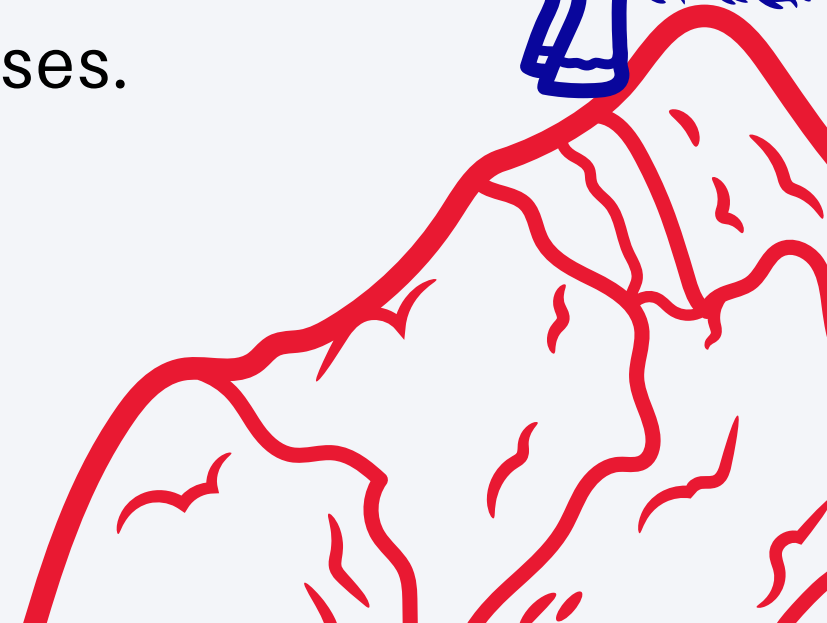
Watch our documentary
about our first trip to
NEPAL and the LANGTANG
VALLEY.

Enjoy the experience
through your screen and be
surprised by the majestic
landscapes that this
magical route houses.

WATCH NOW



You **Tube** ZOCOCAMINO



ADVANTAGES OF TRAVELING WITH US



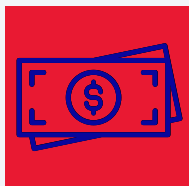
EXCELLENT SERVICE



EXCLUSIVE WELCOME



PERSONALIZED EXPERIENCE



ALL INCLUSIVE



SOCIAL CONTRIBUTION

WHAT THE PROGRAM INCLUDES

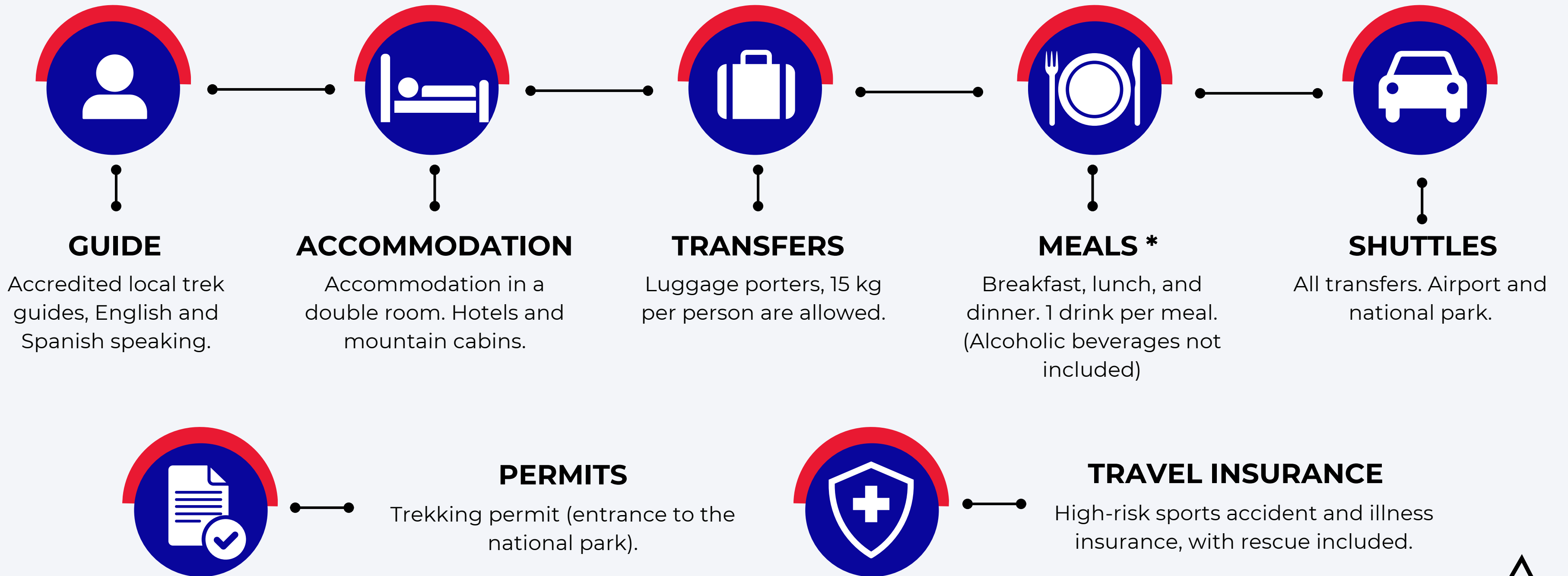


IMAGE GALLERY



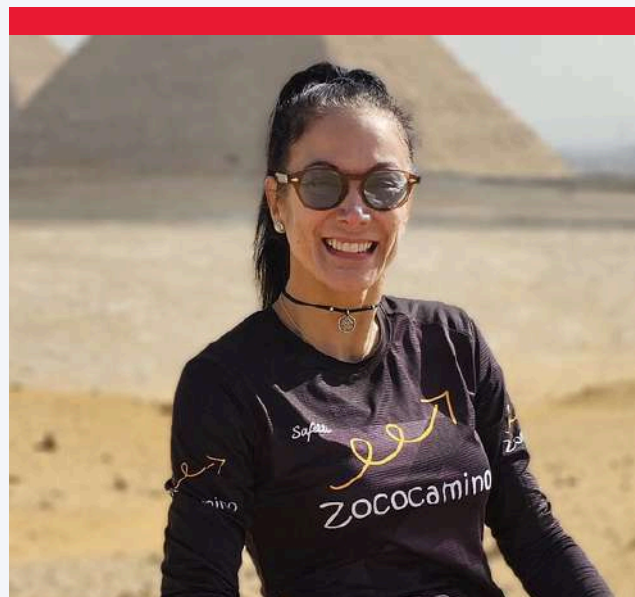
A SPECIAL INVITATION

Hello, Zococamino greets you, and we are passionate about travel and adventure.

If you are reading this now it is because the Camino has aroused great interest in you. Let me tell you something about it, you have to listen to your heart, the Camino is calling you.

Allow us to accompany you on this journey.

We will be your helping hand at all times and nothing excites us more than celebrating all your achievements and seeing how, during this experience, your life is transformed day by day.



ADRIANA FORERO

Adventure Lover



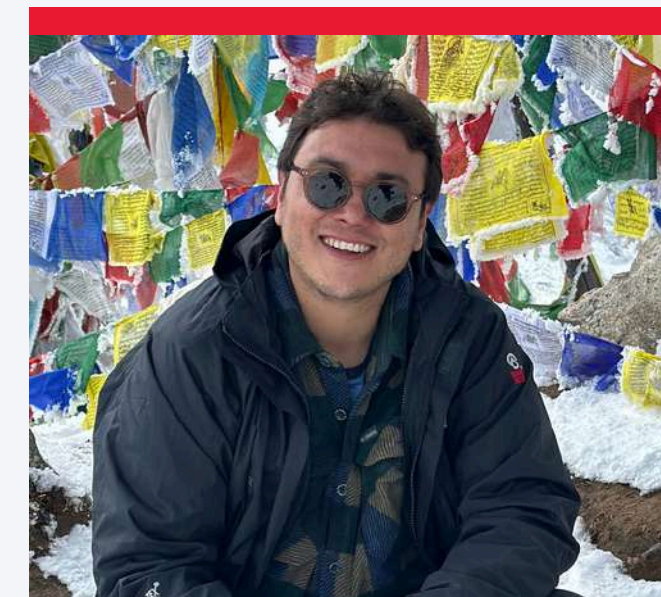
ANTONIO HENARES

Experienced Traveler



CAROLINA MIRANDA

Your Bestie on the Road



ANDRÉS LONDOÑO

Unconditional Companion



CONTACT US

**DO YOU WANT TO GET AN ITINERARY
MORE DETAILED?**



Send us an email:
info@zococamino.com



Write to us by whatsapp:
[+34 646 840 877](https://wa.me/34646840877)



¡IMPORTANT!

A MINIMUM OF EXPERIENCE IS REQUIRED TO BE ABLE TO DO THIS TREKKING.

THE ALTITUDE AND TERRAIN CONDITIONS REQUIRE A GOOD PHYSICAL AND MENTAL STATE. DURING THE JOURNEY WE WILL CROSS DIFFERENT TERRAINS, SOME TECHNICAL AND RISKY, WHICH ARE NOT SUITABLE FOR BEGINNERS.

- Includes the transfer of 1 piece of luggage of maximum 15kgs per passenger. Please note that luggage transfer is carried out by the carriers. You can leave more luggage at the hotel in Kathmandu by managing it directly with the Hotel.
- Includes 1 drink (tea or water) with meals (lunches/dinners). Any additional drinks (soft drinks, beers, coffee) are at the client's expense. In Kathmandu, meals are in typical restaurants with traditional food from the region. During the trekking all meals are VEGETARIAN, with different options to choose from, and in cabins or mountain refuges.
- The experience includes double accommodation rooms in cabins or mountain refuges. There is no heating in the rooms and most do not have a private bathroom. It is important to bring or buy a sleeping bag, coats and toilet paper.
- In the event that an accident occurs due to the passenger not following the route guide's instructions, the insurance may not cover the damages.
- Cancellation or modification of your experience reservation must be made at least one month in advance. Once this period has passed, we will not be able to request a refund of the money paid since we will have incurred hotel and restaurant expenses; These costs have a value of €500.
- We will take photos and videos during the trip. By hiring the experience we assume that we can use these images for our social networks and website for commercial purposes. If you do not agree, it is important that you notify us in writing before making the trip.
- Our package is a closed all-inclusive package. No discounts or money refunds will be made for non-use of any service included in it.

JOIN OUR ADVENTURE
WE ARE WAITING FOR YOU!

 Zococamino