



zococamino

# THE WAY

## OF ST. JAMES - WALKING 2025

A JOURNEY INSIDE ONESELF





# A GREAT ADVENTURE

## 6 STAGES

### 115 Km Walking

Total distance: 340km  
of the road.

9 days - 8 nights

Travel this ancient route  
and enjoy one of the  
experiences that you  
will change life!



**EXCLUSIVE  
TOUR  
ON PRIVATE BUS**

León - Astorga - Ponferrada  
Cruz de Ferro - O Cebreiro





# WHAT IS THE WAY OF ST. JAMES?

It is a route that pilgrims travel from all over the world to reach the city of Santiago de Compostela, where the relics of the apostle Santiago are venerated. During the Middle Ages it was very popular, then it was slightly forgotten and today it is booming again.

The Camino de Santiago has been declared WORLD HERITAGE by UNESCO in 1993. It can be considered the Main Street of Europe.

At the beginning of a century and a millennium, the Jacobean pilgrimage is more than ever, a transversal phenomenon: on the one hand, spiritual and ecumenical, but also open to knowledge, friendship and mutual understanding.





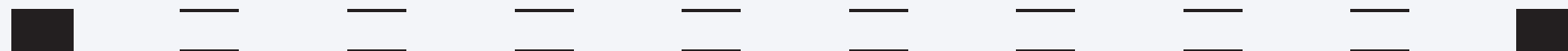
# THE PILGRIM'S CREDENTIAL AND COMPOSTELA



The pilgrim credential is a kind of passport that must be stamped at each stage of the route. It has its origin in the document that, during the Middle Ages, was given to pilgrims as safe conduct.

It serves as a passing certification to request, at the end of the pilgrimage, the Compostela.

With Zococamino you will not have to worry about these aspects since, in the welcome kit, the pilgrim's credential is included and we will take care of the delivery of the Compostela during the last gala dinner.



# WHY DO THE CAMINO DE SANTIAGO?

## CONTACT WITH OTHER CULTURES

Living with people from different parts of the world is the best way to learn about a place and its culture.

## CONTACT WITH NATURE

Throughout the trip it is possible to delight in beautiful landscapes, varied vegetation and get a great energy recharge.

## EXERCISE AND PHYSICAL EFFORT

In addition to the great benefits that physical exercise brings, the belief that fears and physical limits disappear is enhanced.

## HISTORY AND GASTRONOMY

While discovering places with countless historical, architectural and landscape value, you can taste the best dishes of international cuisine.

## SPIRITUALITY AND RELIGION

The Way has a mentally, emotionally and spiritually transformative power for both religious people and those who are not.

# ADVANTAGES OF TRAVELING WITH US



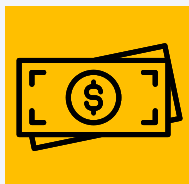
**EXCELLENT SERVICE**



**EXCLUSIVE WELCOME**



**PERSONALIZED EXPERIENCE**



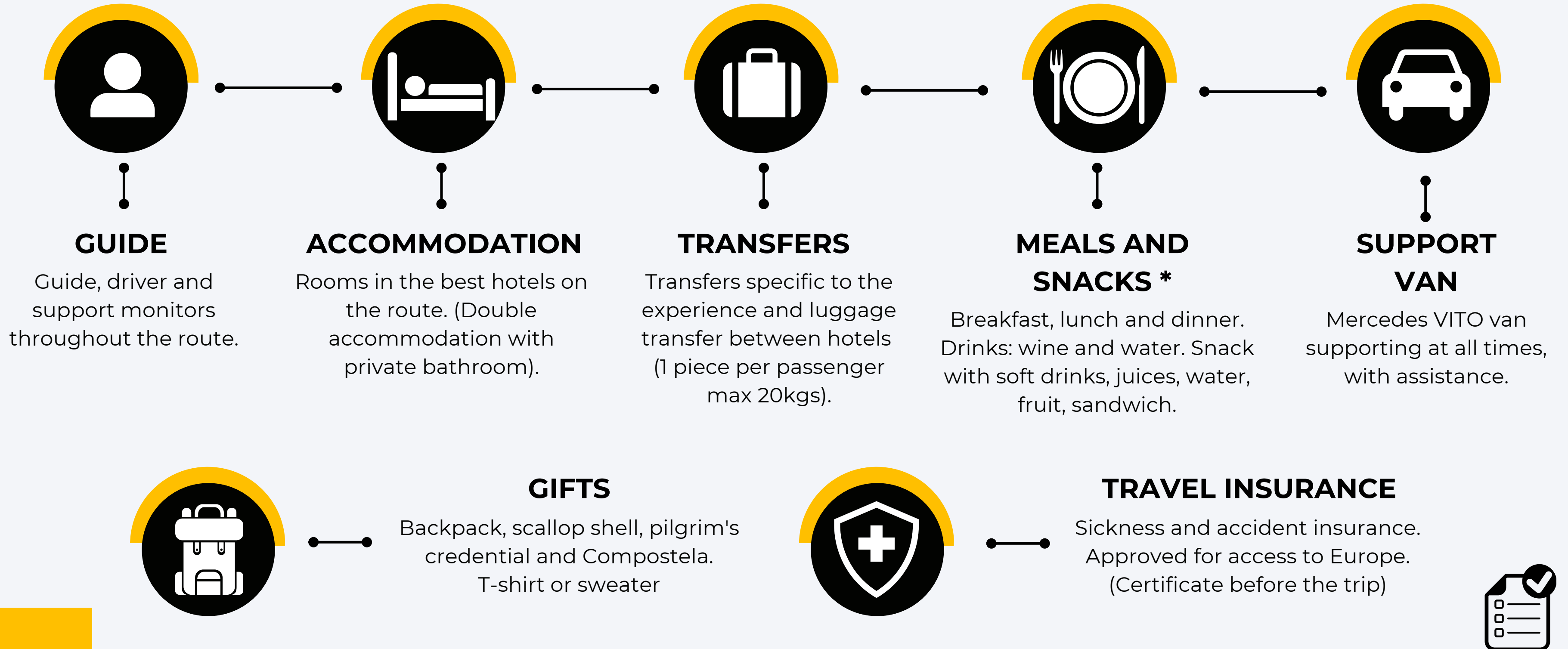
**ALL INCLUSIVE**



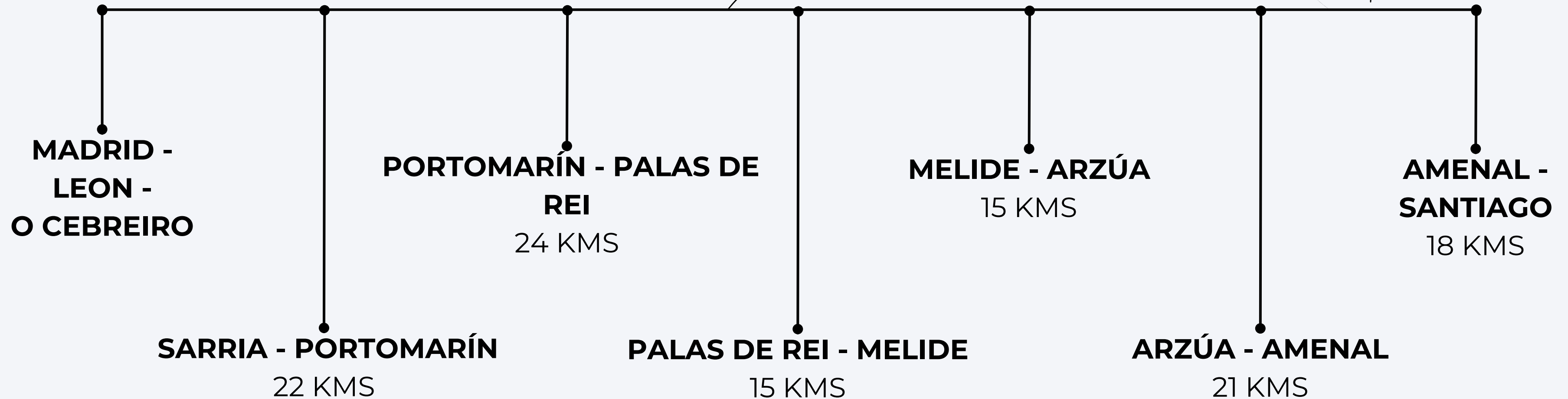
**SOCIAL CONTRIBUTION**



# WHAT DOES THE PROGRAM INCLUDE?



# 6 STAGES ON FOOT - 115 KM

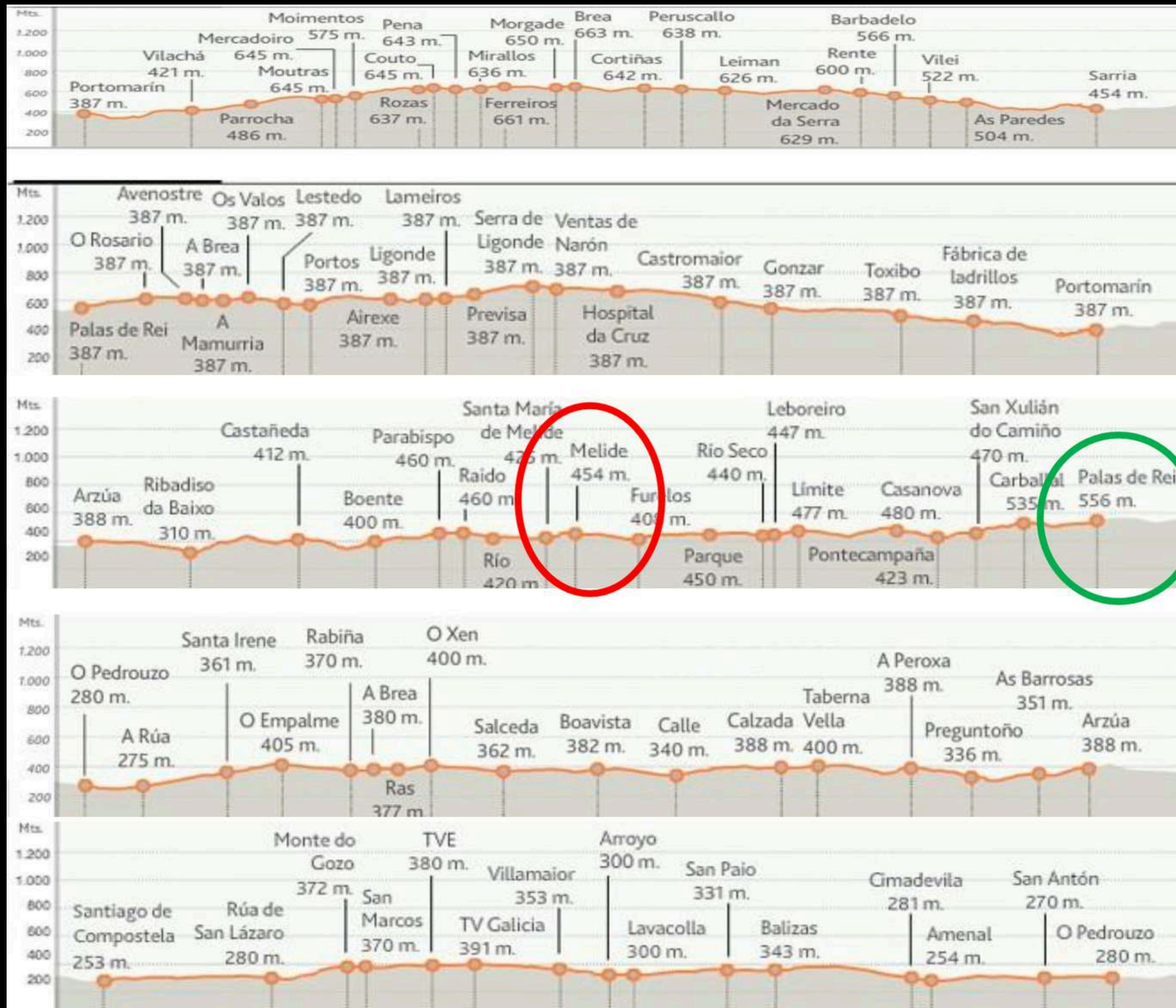






## ALTIMETRY

Sarria  
Portomarín  
Palas de Rei  
Melide  
Arzúa  
Amenal  
Santiago de Compostela





DAY 1



# MADRID

\*

You can check in at the hotel from 2:00 p.m.

Our staff will be at the hotel restaurant at the designated time to welcome you.

Subsequently, a briefing dinner will be shared to get to know each other among all the participants and there we will give them the instructions for the next day.



ZocoCamino

• Hotel Chamartin The One or similar





# MADRID - LEÓN - O CEBREIRO

\*

Concentration in the hotel lobby very early. After receiving breakfast, we will walk to the Chamartín station to take the high-speed train from Madrid to León.

We will continue in a private van to O Cebreiro, making an introduction to the path, visiting Astorga, Castrillo de los Polvazares and holding a commemorative event at Cruz de Ferro, an enigmatic site on the Camino.

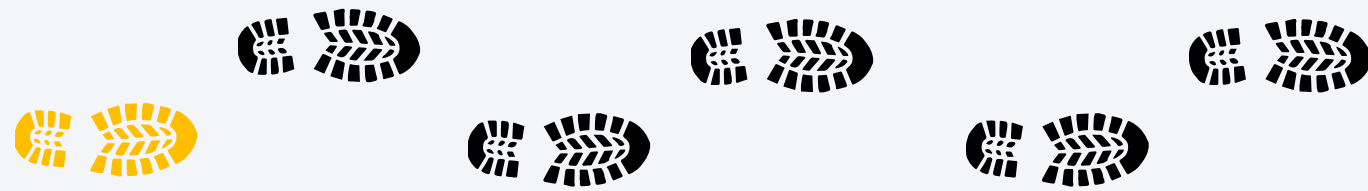
We will pass through Ponferrada and see its Templar castle, and then head to the heart of the path, to O Cebreiro, where we will have a magical end to the day, in a small pre-Romanesque high mountain town.





# DAY 3

1st STAGE 22 kms



ZocoCamino

## O CEBREIRO - SARRIA - PORTOMARÍN

\*

We will depart in the Van to our starting point of the Camino, Sarria, visiting the San Roque monument beforehand.

Sarria is very close to the mythical last 100 kilometers, the minimum distance that must be traveled on foot to obtain the Compostela. This first stage does not disappoint any pilgrim at all.

It offers countless villages in the municipalities of Sarria, Paradela and Portomarín, good examples of Romanesque architecture, paved local roads, rural paths and corridors, medieval bridges and rustic walkways.

Tonight you can share experiences with other pilgrims in the porticoed plaza.

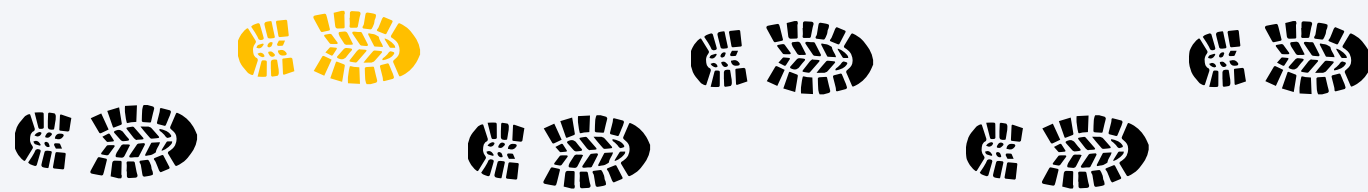


• Hotel Vistalegre Spa or similar



# DAY 4

2nd STAGE 25 kms



 Zococamino

## PORTOMARÍN - PALAS DE REI

\*

The stage is divided by the Ligonde mountain range, which in turn divides the basins of the Miño and Ulloa rivers and the municipalities of Portomarín and Monterroso.

Although the beginning is promising and offers a peaceful ascent up Mount San Antonio, the rest is intoxicating along modest provincial and even national roads.

However, good examples of Romanesque churches, the Cruceiro de Lameiros, liven up the trip and there is also the possibility of taking a detour to see the ruins of an important Celtic Settlement.



• Hotel La Cabaña or similar



# DAY 5

3rd STAGE 17 kms



## PALAS DE REI - MELIDE

\*

Today the effort has a reward, since today will be a stage of recovery.

You will recover all the effort from yesterday with a calm but beautiful day among corridors and among small streams.

The most important thing is that today you will have a very pleasant reward, today you will arrive at the town of Mellide, very famous for its “pulperías”.

You will be able to taste the exquisite octopus a feira on wooden plates, with wines in a clay cup, it will be a real party among many pilgrims.

ZocoCamino



• Hotel Carlos 96 or similar



# DAY 6

4th STAGE 16 kms



## MELIDE - ARZÚA

\*

After having breakfast at the hotel, you will begin the day leaving the town, crossing a river along stone slabs.

From there you will go to Boente and its hermitage where you can make an offering to the saint and seal your credential.

Until Arzúa there is a little effort left, but we assure you that at the end of the stage all that effort expended will make you feel comforted with yourself.

At night there is another good place to snack, since Arzúa is considered the capital of Galician cheese.

Zococamino

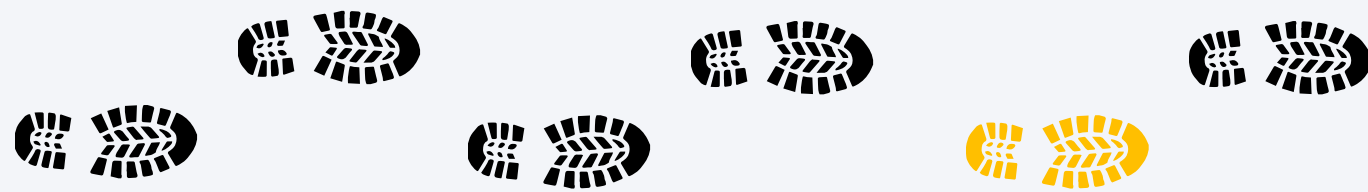


• Hotel Arzúa or similar



# DAY 7

5th STAGE 22 kms



## ARZÚA - AMENAL

\*

The Concello de Arzúa passes the baton to that of O Pino in a comfortable route, with easier slopes and along tracks.

Today will be a stage in which the tiredness is already noticeable in the legs, but in the mind you feel the closeness to Santiago, it will be all excitement. You will find beautiful forests along the route that look like something out of a movie.

Before you know it you will be in O Pedrouzo and just three kilometers away you will have the end of the stage in Amenal.



Zococamino

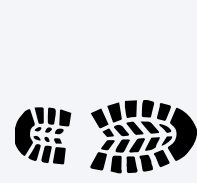
• Hotel Amenal or similar





# DAY 8

6th STAGE 18 kms



## AMENAL - SANTIAGO

\*

The walk becomes serene, perhaps out of nostalgia for finishing and not knowing what to do next.

On trails of leaf litter, between the last patches of eucalyptus and oak trees, the last villages arrive.

The municipality of Santiago awaits at a stop, next to the airport and leads the pilgrim through the parish of Sabugueira.

From the watchtower of Monte do Gozo you get the first panoramic view of Santiago de Compostela and an urban tour begins that ends at the foot of the baroque façade of the cathedral.

The Obradoiro is the end and the beginning.

el Zococamino



• Hotel Compostela or similar



# DAY 9



## SANTIAGO DE COMPOSTELA

\*

After breakfast at the hotel, we will end our services.

We invite you to take a free tour of the city of Santiago, a tour or a visit to a museum this day.

If you plan to take a train from Santiago to another destination, we suggest arranging it in advance as it is a very busy service in the city.



زوكو Camino ZocoCamino





# SOME OF OUR HOTELS\*



Zococamino

Hotel O Cebreiro



Hotel Vistalegre



Hotel La Cabaña



Hotel Carlos 96



O CEBREIRO



PORTOMARÍN



PALAS DE REI



MELIDE

\*Due to our high demand, the hotels may not be the same but they will always be of a similar category.



# SOME OF OUR HOTELS\*



Hotel Arzúa



Hotel Amenal



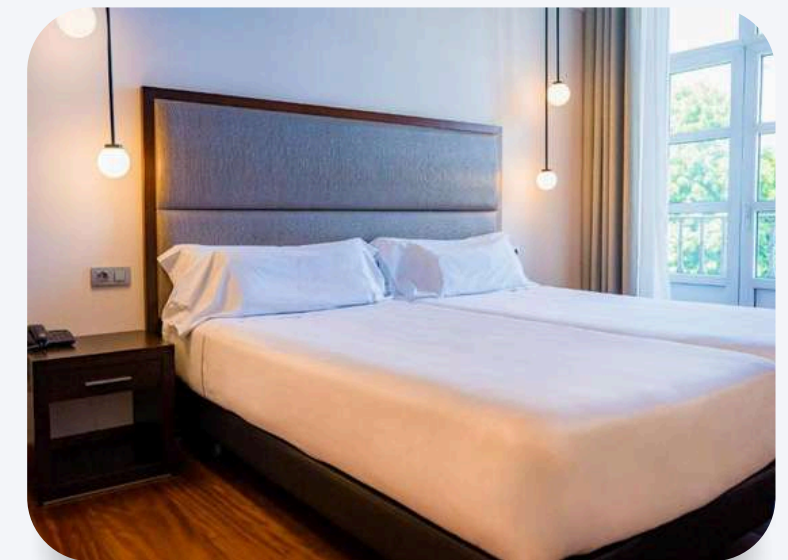
Hotel Compostela



ARZÚA



AMENAL

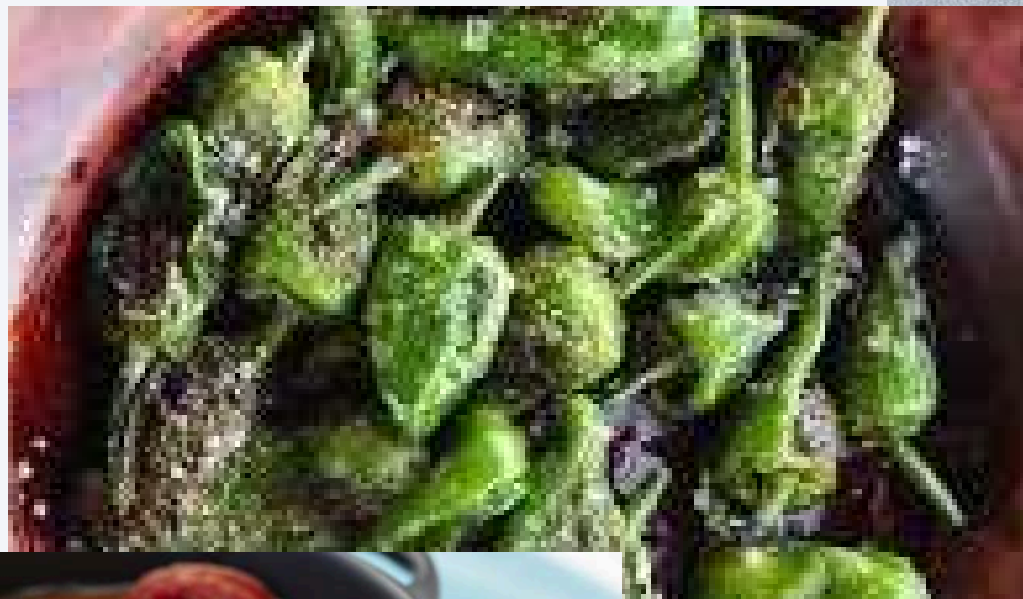


SANTIAGO DE COMPOSTELA

\*Due to our high demand, the hotels may not be the same but they will always be of a similar category.



# GASTRONOMY



You can enjoy the best octopus, zamburiñas, Galician empanada, Santiago cake...



# OPINIONS FROM OUR CLIENTS

**"An unforgettable experience, a great bicycle trip, they are very professional and give everything to make the experience the best."**

**-Fernán**

**"I felt like I needed to do something different, get out of my comfort zone... it eventually becomes a great adventure."**

**-Lina**

**"Whenever I can, I will sign up for all the trips they have. It has been magical to meet people as wonderful as the ZocoCamino staff"**

**-Priscilla**

 **ZocoCamino**





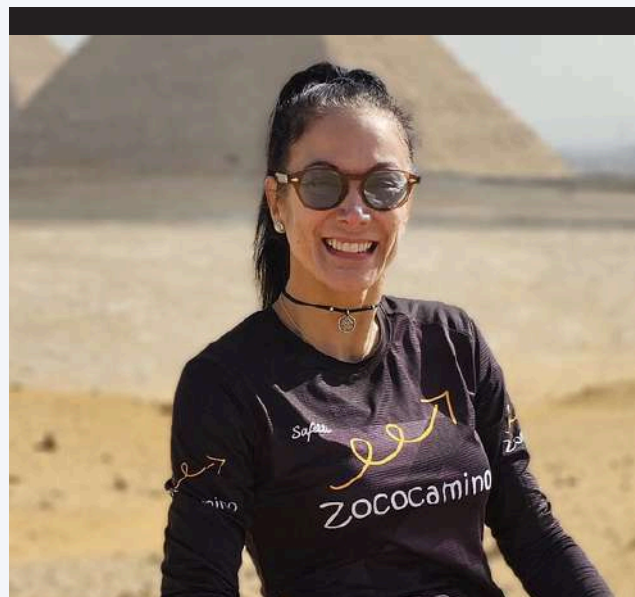
# A SPECIAL INVITATION

Hello, we are Zococamino, and we are passionate about travel and adventure.

If you are reading this now it is because the Camino has aroused great interest in you. Let me tell you something about it, you have to listen to your heart, the Camino is calling you.

Allow us to accompany you on this journey.

We will be your helping hand at all times and nothing excites us more than celebrating all your achievements and seeing how, during this experience, your life is transformed day by day.



**ADRIANA FORERO**

Adventure Lover



**ANTONIO HENARES**

Experienced Traveler



**CAROLINA MIRANDA**

Your Bestie on the Road



**ANDRÉS LONDOÑO**

Unconditional Companion



# OUR SUPPORT VANS



**Volkswagen Crafter**



**Mercedes-Benz Vito**  
**Mercedes-Benz Sprinter**



# CONTACT US

**DO YOU WANT TO GET A MORE  
DETAILED ITINERARY?**



Send us an email:  
[info@zococamino.com](mailto:info@zococamino.com)



Write to us by Whatsapp:  
[+34 646 840 877](https://wa.me/34646840877)





# ¡IMPORTANT!

- Each passenger is allowed one piece of luggage with a maximum weight of 20 kg. Any excess weight or additional items (suitcases, backpacks, etc.) will incur a fee of €60 for the entire experience. You can store additional luggage at the Madrid Hotel for a fee of €5 per item per night.
- Lunches are picnic-style in natural settings, featuring typical regional products (cheeses, hams, empanadas, sandwiches, salads, etc.).
- One drink (wine or water) is included with dinner. Any additional beverages (soft drinks, beer, coffee) will be at the customer's expense. Dinners are served in restaurants and hotels with a pre-arranged group menu.
- Please note that the experience includes double occupancy rooms with a private bathroom. If you prefer a single room, an additional fee will apply.
- In the event of an accident due to the passenger not following the guide's instructions on the route, the insurance may not cover the damages.
- Cancellation or modification of your experience booking must be made at least one month in advance. After this period, no refunds will be issued, as we will have incurred hotel and restaurant expenses totaling €500.
- We will take photos and videos during the trip. By booking this experience, you agree that we may use these images for our social media and website for commercial purposes. If you do not agree, please notify us in writing before the trip.
- Our package is a closed all-inclusive package. No discounts or refunds will be given for any unused services included in the package.



JOIN OUR ADVENTURE  
WE WAIT FOR YOU!

 Zococamino